

SHARPEYE®

LIGHTER, STRONGER, FASTEST

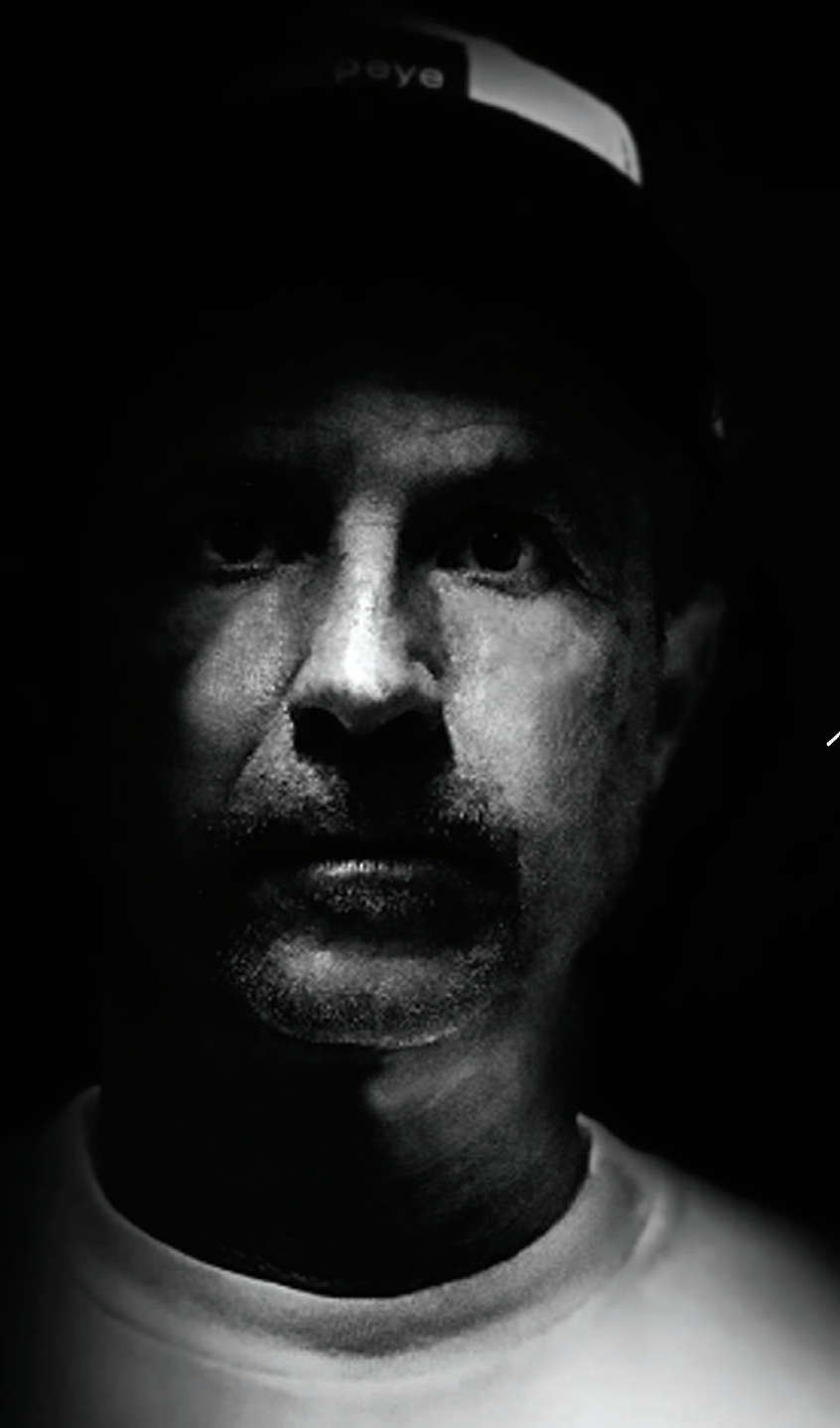


SHARPEYE INTERNATIONAL®

2023 CATALOG

BUILDING BOARDS FOR CHAMPIONS





INTRODUCTION

The Sharp Eye Brand started with head shaper Marcio Zouvi, beginning his shaping career in the late 80's with Californian influences like Rusty, Linden and Al Merrick. Sharp Eye Surfboards is focused on high performance shortboards designed with progressive surfing in mind to allow surfers to raise the bar.

RECENT SHAPING ACCULADES:

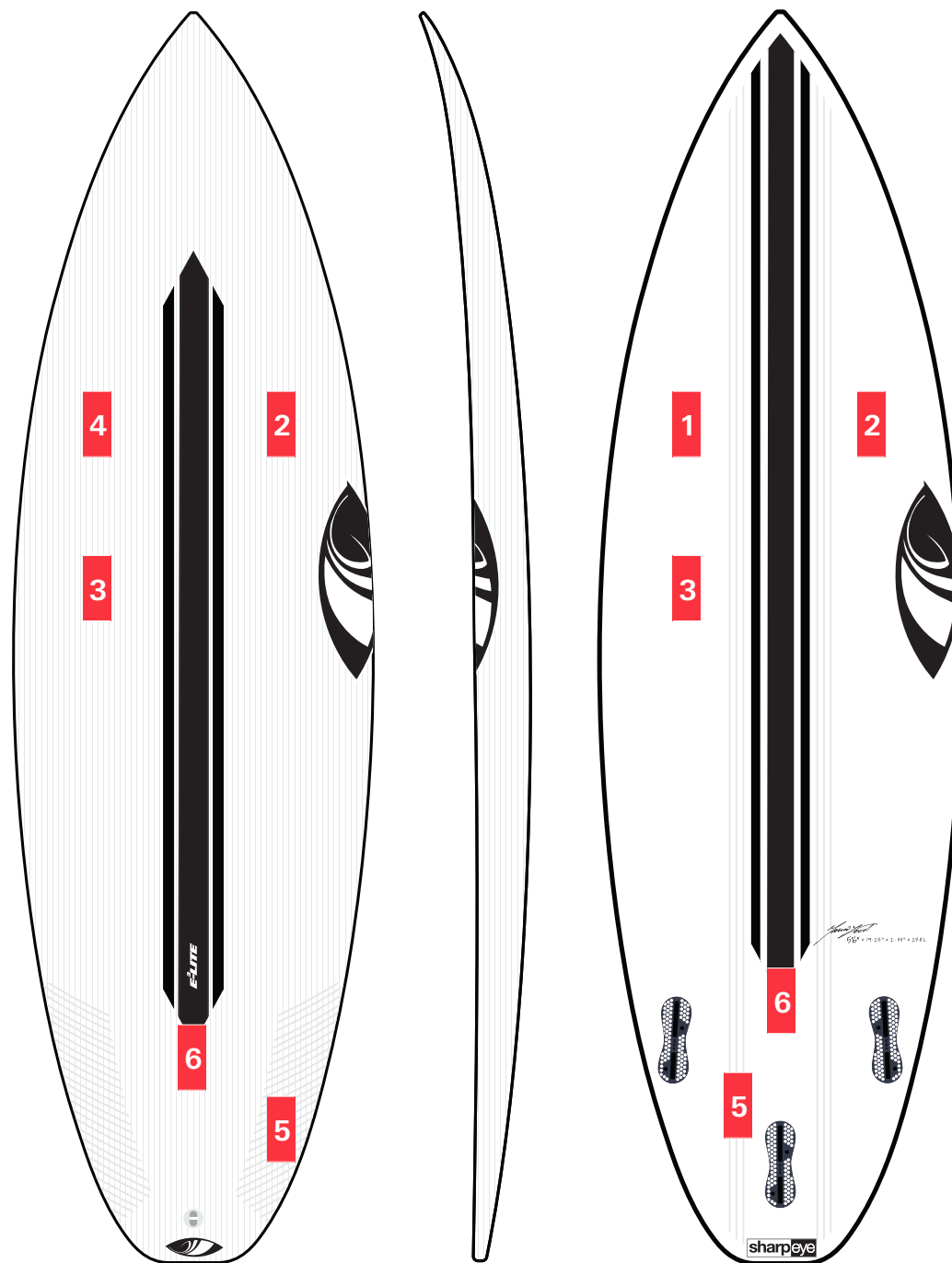
**WSL WORLD CHAMPIONSHIP
STAB IN THE DARK
WORLD SHAPERS CUP**

"It's clear that there is something special in the resin and in between the walls of Sharp Eye's factories. The champions finished with 115 points in the World Shaper's Cup , nearly doubling the score of runners-up DHD surfboards (58)." —Tracks Magazine

TECHNOLOGY

E3-LITE CONSTRUCTION

- 1. Stringerless 2lbs EPS Core
- 2. Epoxy Resin
- 3. 4oz Deck and Bottom
- 4. Biaxial Fiberglass Deck
- 5. Inegra Reinforcements
Toe/Heel & Bottom
- 6. Carbon Reinforcements
Deck & Bottom
- 7. Sanded Matte Finish





W O R L D C H A M P I O N

LENGTH	WIDTH	THICK- NESS	VOLUME
5'4"	18.15"	2.18"	21.2L
5'6"	18.25"	2.25"	22.8L
5'8"	18.4"	2.32"	24.3L
5'9"	18.5"	2.35"	25.2L
5'10"	18.75"	2.42"	26.67L
5'11"	19"	2.5"	28.2L
6'0"	19.25"	2.5"	29L
6'1"	19.25"	2.52"	29.7L
6'2"	19.4"	2.55"	30.7L
6'3"	19.5"	2.58"	31.65L
6'4"	19.5"	2.6"	32.31L

ABILITY LEVEL



OUTLINE



WAVE HEIGHT (FEET)



WAVE TYPE



RAIL TYPE



ENTRY ROCKER



EXIT ROCKER

**HT2****HT2 / E3****Ultimate Everyday Performance**

The HT2 delivers the world's fastest surfboard with unequalled everyday performance.

A Filipe Toledo Pro Model. The HT2 (Holy Toledo 2) is the evolution of Filipe Toledo's original Holy Toledo pro model and was developed for unequalled performance in everyday conditions. The HT2 features a forgiving yet sensitive medium/boxy rail that minimises rail catches in both full/flat sections and sub-par conditions. The HT2 combines a deep single concave and a generous sweet spot between the feet with a medium entry rocker for an instant burst of speed on take-off, the entry rocker flows seamlessly into a flattened exit rocker, delivering peak hold and drive where needed. A perfect combination for everyday conditions.

The HT2 offers Ultimate Everyday Performance, versatility and consistency in everyday conditions.

FIN TYPE	Thruster
FIN SYSTEM	FCS - Sharp Eye PC Futures - Sharp Eye
TAIL TYPE	Squash
BOTTOM	Deep Single Concave

J A C K

R O B I N S O N



STOCK DIMENSIONS

LENGTH	WIDTH	THICK- NESS	VOLUME
4'10"	16.75"	1.9"	16.1L
5'0"	17"	2.0"	17.7L
5'2"	17.25"	2.0"	18.6L
5'6"	18.31"	2.25"	23.6L
5'8"	18.4"	2.32"	25.1L
5'9"	18.5"	2.38"	26.5L
5'10"	18.75"	2.43"	27.6L
5'11"	19.0"	2.45"	28.5L
6'0"	19.15"	2.5"	29.8L
6'1"	19.43"	2.56"	31.3L
6'2"	19.5"	2.62"	32.6L
6'3"	19.75"	2.68"	34.2L
6'4"	19.75"	2.68"	34.7L

GROM SIZES IN BOLD

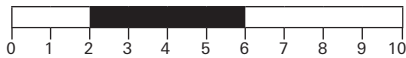
ABILITY LEVEL

Beginner	Intermediate	Advanced
----------	--------------	----------

OUTLINE

Groveller	Everyday	Performance
-----------	----------	-------------

WAVE HEIGHT (FEET)



WAVE TYPE

Reef	Beach	Point
------	-------	-------

RAIL TYPE

Boxy	Medium	Low
------	--------	-----

ENTRY ROCKER

Flat	Medium	Full
------	--------	------

EXIT ROCKER

Flat	Medium	Full
------	--------	------

**SYNERGY**

SYNERGY / E3

EXPLOSIVE CONTROL, SUPREME PERFORMANCE.

The Synergy has been developed for explosive control and supreme performance in steep, quality waves.

Developed with team feedback and the demand for modern, high-performance surfing. The synergy between surfer and shaper has created a dynamic performance shortboard.

The Synergy features a high entry, continuous rocker (not dissimilar to our #77), and an aggressive amount of tail rocker to fit into the tightest of curves. Its deep single concave assists with speed generation and control. Combined, these features create a fast-flowing surfboard that is highly responsive and reactive under your feet.

An excellent companion to your Inferno 72 when the waves call for something with added rocker and curve.

FIN TYPE	Thruster
FIN SYSTEM	FCS - Sharp Eye PC Futures - Sharp Eye
TAIL TYPE	Squash
BOTTOM	Deep Single Concave

F I L I P E T O L E D O



STOCK DIMENSIONS

LENGTH	WIDTH	THICK- NESS	VOLUME
4'10"	16.75	1.9"	15.8L
5'0"	17"	2.0"	17.48L
5'2"	17.25"	2.0"	18.34L
5'4"	18.25"	2.25"	22.1L
5'6"	18.5"	2.37"	24.2L
5'8"	18.75"	2.37"	25.3L
5'8"A	19"	2.43"	26.6L
5'8"HV	19.5"	2.58"	29.1L
5'9"	19"	2.45"	27.1L
5'10"	19"	2.5"	28L
5'10"A	19.25"	2.62"	29.4L
5'10"HV	19.88"	2.68"	32.1L
5'11"	19.25"	2.5"	28.8L
6'0"	19.37"	2.62"	31.0L
6'0"HV	20.25"	2.78"	34.7L
6'1"	19.5"	2.62"	31.6L
6'2"	19.62"	2.62"	32.4L
6'3"	19.68"	2.62"	33L
6'4"	19.75"	2.68"	34.1L

GROM SIZES IN BOLD

COLORS

BLACK RAIL	WHITE (CLEAR)
WHITE (CLEAR)	

ABILITY LEVEL

Beginner	Intermediate	Advanced
----------	--------------	----------

OUTLINE

Groveller	Everyday	Performance
-----------	----------	-------------

WAVE HEIGHT (FEET)

0	1	2	3	4	5	6	7	8	9	10
---	---	---	---	---	---	---	---	---	---	----

WAVE TYPE

Reef	Beach	Point
------	-------	-------

RAIL TYPE

Boxy	Medium	Low
------	--------	-----

ENTRY ROCKER

Flat	Medium	Full
------	--------	------

EXIT ROCKER

Flat	Medium	Full
------	--------	------

**INFERNO⁷²****INFERNO 72 / E3****PROVEN PERFORMANCE**

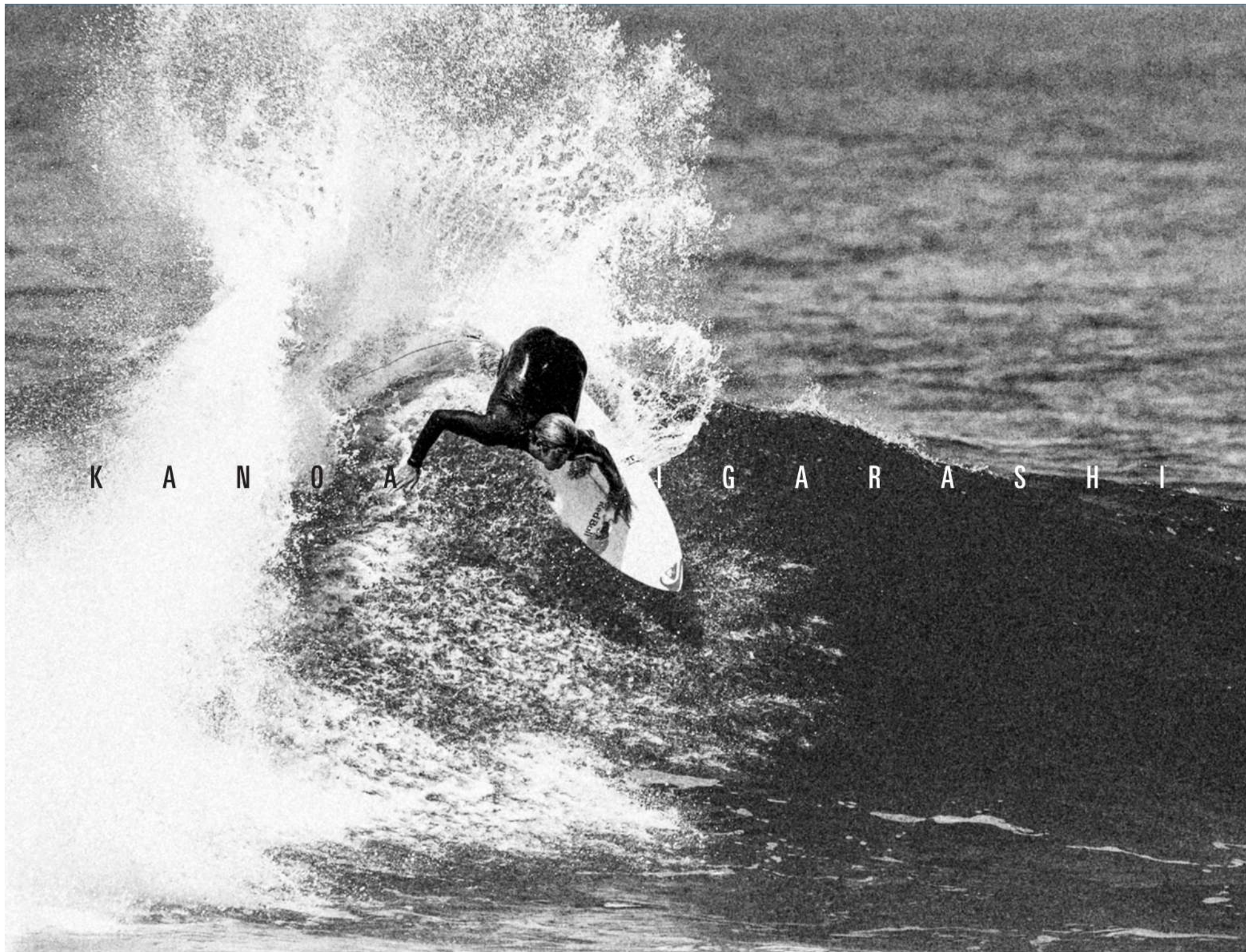
The Inferno 72 has been developed to offer proven performance in small to medium-sized conditions. A global staple, favoured by professional and everyday surfers alike, the Inferno 72 model is the must-have, tuned-up, everyday shortboard.

Featuring a medium single concave that flows into a deep double between the fins. These concaves, combine with a medium entry rocker that flows seamlessly into a medium exit rocker, providing an instant burst of speed from take-off, and an exceptional balance of manoeuvrability and drive. These features integrate with a reliable, controlled medium rail, to deliver the perfect combination for everyday conditions. The Stab in the Dark winning Inferno 72's proven performance will handle just about any conditions thrown at it.

It's recommended to order the Inferno 72 in the same size as your go-to shortboard. Drop one inch for a step down.

FIN TYPE	Thruster
FIN SYSTEM	FCS - Filipe Toledo PC Futures - F8
TAIL TYPE	Squash
BOTTOM	Single to Double Concave

K A N O U I G A R A S H I



STOCK DIMENSIONS

LENGTH	WIDTH	THICK- NESS	VOLUME
5'4"	19.0"	2.38"	26L
5'6"	19.25"	2.44"	27.8L
5'8"	19.63"	2.5"	30L
5'9"	19.75"	2.5"	30.6L
5'10"	20"	2.5"	31.5L
5'11"	20.5"	2.63"	34.3L
6'0"	21"	2.75"	37.3L
6'2"	21.5"	2.75"	39.3L
6'4"	21.5"	2.75"	40.3L

COLORS

GRAY BASE	WHITE UPPER
SAND BASE	WHITE UPPER
WHITE (CLEAR)	

ABILITY LEVEL

Beginner	Intermediate	Advanced
----------	--------------	----------

OUTLINE

Groveler	Everyday	Performance
----------	----------	-------------

WAVE HEIGHT (FEET)

0	1	2	3	4	5	6	7	8	9	10
---	---	---	---	---	---	---	---	---	---	----

WAVE TYPE

Reef	Beach	Point
------	-------	-------

RAIL TYPE

Boxy	Medium	Low
------	--------	-----

ENTRY ROCKER

Flat	Medium	Full
------	--------	------

EXIT ROCKER

Flat	Medium	Full
------	--------	------



ストームズ[®] *TWIN* **TURBO**

STORMS TWIN TURBO / E3

EXCEPTIONAL HOLD WITH PHENOMENAL PERFORMANCE.

The Storms Twin Turbo (T2) delivers you the world's fastest surfboard with Exceptional Hold and Supreme Performance in small to medium conditions.

A Kanoa Igarashi Pro Model. The Storms Twin Turbo (T2) was developed to deliver Exceptional Hold and Supreme Performance in small to medium conditions. Featuring a medium single concave that flows seamlessly into the 'Turbo Channel'. Designed to provide increased bite, drive and hold. The Storms T2 delivers projection through dead sections with an abundance of speed, allowing progressive modern surfing in smaller conditions. The Storms T2 offers added spark in waves under 4 ft.

We recommend riding this board 2-4 inches shorter than your regular shortboard and adding a touch of width and thickness.

FIN TYPE	2+1 Triller
FIN SYSTEM	FCS - MR or Power Twin FUTURES - TF1
TAIL TYPE	Swallow
BOTTOM	Single to Deep Double Concave

STOCK DIMENSIONS

LENGTH	WIDTH	THICK- NESS	VOLUME
5'4"	19.25"	2.37"	26L
5'6"	19.75"	2.5"	29.6L
5'8"	20"	2.5"	30.8L
5'10"	20.25"	2.625"	33.6L
6'0"	20.5"	2.68"	35.8L
6'2"	20.75"	2.75"	38.5L
6'4"	21"	2.93"	42.3L

COLORS

AQUA DECK	WHITE BOTTOM
RED DECK	WHITE BOTTOM
WHITE (CLEAR)	

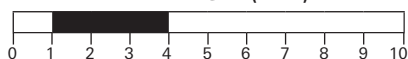
ABILITY LEVEL

Beginner	Intermediate	Advanced
----------	--------------	----------

OUTLINE

Groveller	Everyday	Performance
-----------	----------	-------------

WAVE HEIGHT (FEET)



WAVE TYPE

Reef	Beach	Point
------	-------	-------

RAIL TYPE

Boxy	Medium	Low
------	--------	-----

ENTRY ROCKER

Flat	Medium	Full
------	--------	------

EXIT ROCKER

Flat	Medium	Full
------	--------	------

**MODERN 2****MODERN 2 / E3****ALTERNATE PERFORMANCE**

The Modern 2 delivers the world's fastest surfboard with Alternate Performance in everyday conditions.

The Modern 2 can be configured as a performance two plus one or thruster that features a flat entry rocker that seamlessly flows into a flattened exit combined with a forgiving, catch-resistant boxy rail. A Vee bottom contour through to the tail, allows the Modern 2 to make tight directional changes with release, all the while maintaining an exceptional amount of speed and drive.

The Modern 2 combines pure fun with Alternate Performance, the perfect addition to any summer quiver.

FIN TYPE	2+1 Trailer
FIN SYSTEM	FCS - MR or Sharp Eye PC FUTURES - Sharp Eye
TAIL TYPE	Swallow
BOTTOM	Vee Bottom

STOCK DIMENSIONS

LENGTH	WIDTH	THICKNESS	VOLUME
5'4"	19.0"	2.38"	26L
5'6"	19.25"	2.44"	27.8L
5'8"	19.63"	2.5"	30L
5'9"	19.75"	2.5"	30.6L
5'10"	20"	2.5"	31.5L
5'11"	20.5"	2.63"	34.3L
6'0"	21"	2.75"	37.3L
6'2"	21.5"	2.75"	39.3L
6'4"	21.5"	2.75"	40.3L

COLORS

WHITE DECK	ORANGE BOTTOM
WHITE DECK	GRAY BOTTOM
WHITE (CLEAR)	

ABILITY LEVEL

Beginner	Intermediate	Advanced
----------	--------------	----------

OUTLINE

Groveler	Everyday	Performance
----------	----------	-------------

WAVE HEIGHT (FEET)

0	1	2	3	4	5	6	7	8	9	10
---	---	---	---	---	---	---	---	---	---	----

WAVE TYPE

Reef	Beach	Point
------	-------	-------

RAIL TYPE

Boxy	Medium	Low
------	--------	-----

ENTRY ROCKER

Flat	Medium	Full
------	--------	------

EXIT ROCKER

Flat	Medium	Full
------	--------	------

**MODERN 2.5****MODERN 2.5 / E3****YOUR GO TO BOARD FOR SUMMER CONDITIONS.**

This design has the same rocker and thickness distribution as the Modern 2. We changed the outline for a wing pin tail and carver a double concave bonzer bottom above the fins.

The Modern 2.5 was designed to be ridden as a thruster or twin fin. The idea about these modifications was to keep the excellent paddling features and speed of the Modern 2 in small to medium conditions and to add more drive and carving ability. The Modern 2.5 will be your go to board for most summer conditions.

We recommend riding this board 2-4 inches shorter than your regular shortboard.

FIN TYPE	5-Fin
FIN SYSTEM	FCS - Sharp Eye PC FUTURES - Sharp Eye
TAIL TYPE	Swallow
BOTTOM	Single concave to Turbo Channel

STOCK DIMENSIONS

LENGTH	WIDTH	THICK- NESS	VOLUME
5'4"	19"	2.37"	25.6L
5'6"	19.37"	2.37"	27L
5'8"	19.5"	2.43"	28.6L
5'8"HV	20.0"	2.65"	32.6L
5'9"	19.5"	2.5"	30L
5'10"	19.75"	2.55"	31.3L
5'10"HV	20.75"	2.75"	35.8L
6'0"	20.0"	2.62"	33.9L
6'0"HV	21.0"	2.85"	38.6L
6'2"	20.5"	2.68"	36.9L
6'4"	20.75"	2.75"	38.5L
6'6"	21.0"	2.87"	42.1L

COLORS

GRAY RAIL	WHITE UPPER
BLUE RAIL	WHITE UPPER

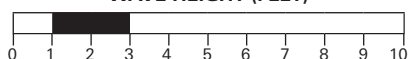
ABILITY LEVEL



OUTLINE



WAVE HEIGHT (FEET)



WAVE TYPE



RAIL TYPE



ENTRY ROCKER



EXIT ROCKER

***CHEAT CODE*****CHEAT CODE / E3****HIGH VOLUME PERFORMANCE**

The Cheat Code delivers the world's fastest surfboard developed to offer up-volumed performance in small-sized conditions.

A tuned-up, up-volumed, performance shortboard. The Cheat Code features a forgiving boxy rail that minimises rail catches in both full/flat sections and sub-par conditions. The bottom contour features a medium single concave that flows into a deep double between the fins ending with a flat exit. These concaves combine with a flat entry rocker that flows seamlessly into a flat exit rocker, providing an instant burst of speed from take-off with exceptional control, drive and carry in small-sized conditions.

We recommend riding this board 2-4 inches shorter than your regular shortboard and adding a touch of width and thickness.

FIN TYPE	5-Fin
FIN SYSTEM	FCS - Sharp Eye PC FUTURES - Sharp Eye
TAIL TYPE	Squash
BOTTOM	Medium Single to Deep Double Concave to Flat Exit

STOCK DIMENSIONS

LENGTH	WIDTH	THICK- NESS	VOLUME
6'4"	20"	2.6"	35.3L
6'6"	20.25"	2.68"	38L
6'8"	20.5"	2.68"	39.3L
6'10"	21"	2.7"	41.6L
7'0"	21.25"	2.7"	43.1L
7'2"	21.5"	2.88"	47.8L

COLORS

WHITE	GRAY RAIL
WHITE	LT. BLUE RAIL
WHITE (CLEAR)	

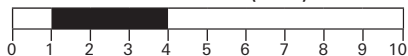
ABILITY LEVEL

Beginner	Intermediate	Advanced
----------	--------------	----------

OUTLINE

Groveller	Everyday	Performance
-----------	----------	-------------

WAVE HEIGHT (FEET)



WAVE TYPE

Reef	Beach	Point
------	-------	-------

RAIL TYPE

Boxy	Medium	Low
------	--------	-----

ENTRY ROCKER

Flat	Medium	Full
------	--------	------

EXIT ROCKER

Flat	Medium	Full
------	--------	------

**MIDGICIAN****MIDGICIAN / E3****YOUR GO TO BOARD FOR
SUMMER CONDITIONS.**

The Midgician delivers on performance developed to out perform any other mid-length board on the market.

The Midgician is slightly wider and thicker than our shortboards, providing a stable and forgiving ride for beginner to advanced surfers. The Midgician is well-suited for a wide range of wave conditions and is often preferred by surfers who want a versatile board that can perform well in both small and medium-sized waves.

The Midgician is also the perfect choice for surfers that are pushing the limits of high performance surfing but the swell requires a little more board.

We recommend riding this board at least 4 inches longer than your regular shortboard.

FIN TYPE	2+1 Trailer
FIN SYSTEM	FCS - MR or Sharp Eye PC FUTURES - Sharp Eye
TAIL TYPE	Rounded Pin
BOTTOM	Single concave to Double Concave

2023 INTERNATIONAL CATALOG

COBRA MODELS
Sharpeyesurfboards.com

**PROGRESSIVE PERFORMANCE
SURFBOARDS FOR THE
WORLD'S BEST SURFERS**

'ZERO COMPROMISE'

Head Office
Sharp Eye Surfboards
International USA
(619) 542-1088
3351 Hancock Street
San Diego CA 92110

